

**SITE INFORMATION**

GPIN NO: J05-3995-0816 I06-0260-4947 I05-3417-4710  
 J06-3076-0544 I06-0026-5401 I05-2715-5420  
 J05-3625-0395 I06-0429-5299  
 J05-3790-0116 I06-0795-5318

OWNER: BRIDGEWATER CROSSING, INC.

ZONING: 112.79 +/- ACRES (BUSINESS)  
 4.64 ACRES (AGRICULTURAL)  
 117.43 +/- ACRES (TOTAL)

PROPOSED ZONING: PUD (PLANNED UNIT DEVELOPMENT) = 117.43 ACRES  
 COMMERCIAL LANDBAY = 16.36 ACRES  
 RESIDENTIAL LANDBAY = 101.07 ACRES

RESOURCE PROTECTION AREA (RPA) = 31.86 ACRES  
 NET DEVELOPABLE AREA = 85.6 ACRES

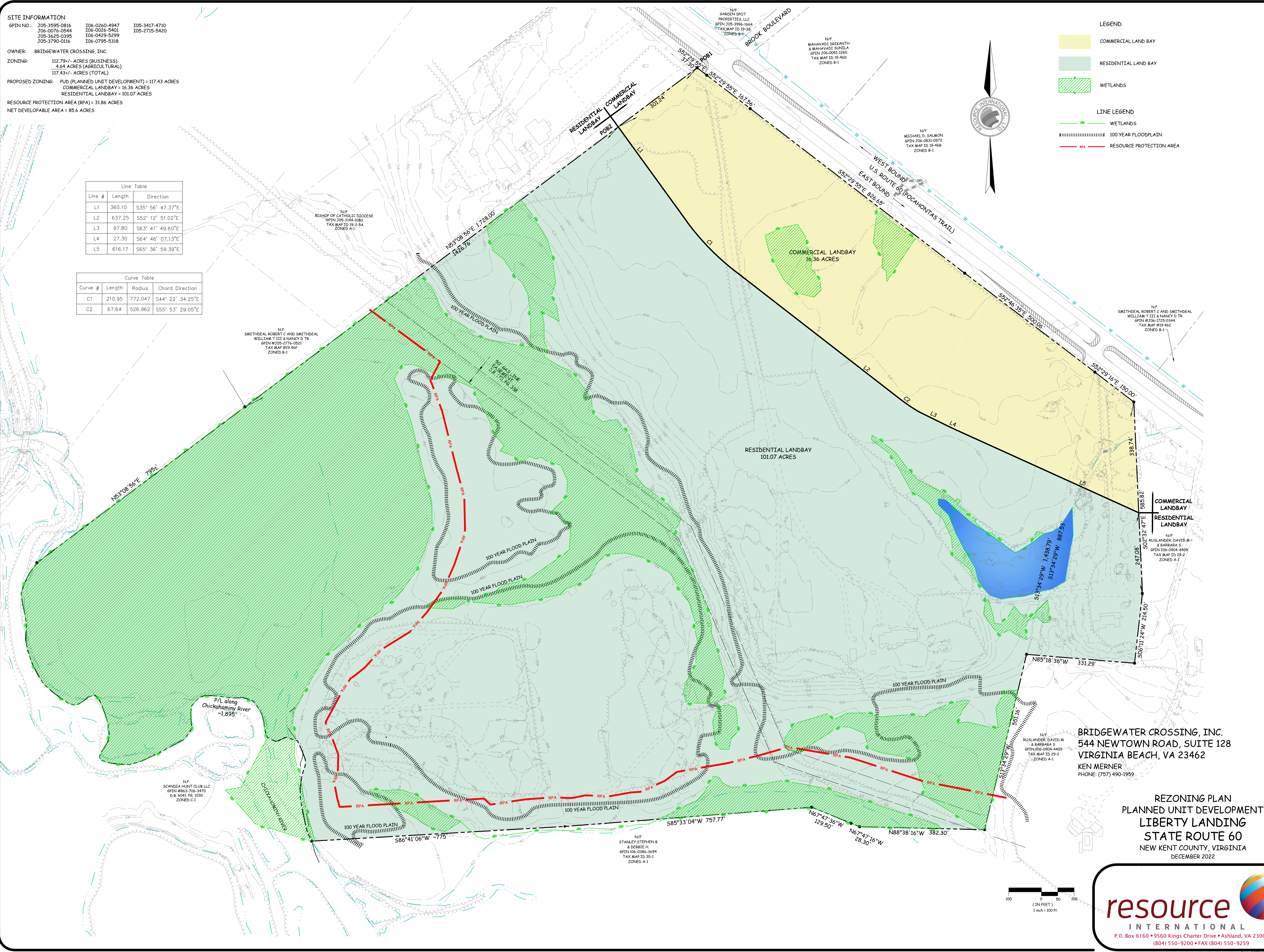
Line Table		
Line #	Length	Direction
L1	360.10	S35° 56' 47.37"E
L2	637.25	S52° 12' 51.02"E
L3	97.80	S63° 41' 49.60"E
L4	27.30	S64° 46' 07.13"E
L5	616.17	S65° 36' 59.39"E

Curve Table			
Curve #	Length	Radius	Chord Direction
C1	210.95	772.047	S44° 22' 34.25"E
C2	67.64	526.962	S55° 53' 29.05"E

- LEGEND**
- COMMERCIAL LANDBAY
  - RESIDENTIAL LANDBAY
  - WETLANDS
- LINE LEGEND**
- WETLANDS
  - 100 YEAR FLOODPLAIN
  - RPA
  - RESOURCE PROTECTION AREA

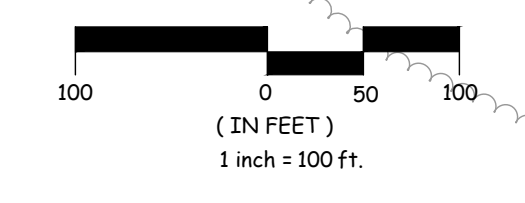


S:\Planning\ACTIVE - Projects\20502918 - Liberty Landing - Master Plan\Drawings\2022 Master Plan\2022-Dec-LL-Zoning-Plan.dwg, Plotted: Dec 07, 2022-8:51am



**BRIDGEWATER CROSSING, INC.**  
 544 NEWTOWN ROAD, SUITE 128  
 VIRGINIA BEACH, VA 23462  
 KEN MERNER  
 PHONE: (757) 490-1999

**REZONING PLAN**  
**PLANNED UNIT DEVELOPMENT**  
**LIBERTY LANDING**  
**STATE ROUTE 60**  
 NEW KENT COUNTY, VIRGINIA  
 DECEMBER 2022



**resource** INTERNATIONAL

P.O. Box 6160 • 9560 Kings Charter Drive • Ashland, VA 23005  
 (804) 550-9200 • FAX (804) 550-9259

P.N. 20502918